



COUNTRY

INN & SUITES®

BY RADISSON



Guestroom | CIS-CPT-021.3

style	BS051
color	Z943K
product type	broadloom
fiber	eco solution q® nylon
dye method	100% solution dyed
construction	multi-level loop tip shear
tufted weight	32.0 oz/yd ² 1085.01 g/m ²
gauge	1/10 in 39.4 per 10 cm
stitches	12 per in 47.2 per 10 cm
size	13 ft 3.96 m
pattern repeat	52 in w x 52 in l 1.32 m w x 1.32 m l
backing	classicbac®
installation	stretch in
warranty	10 year commercial limited



For sample, order BS051 color Z943K.



Guestroom | CIS-LVT-21.1

style	BS099
color	00604
product type	COREtec [®]
construction	multilayer wpc with attached cork underlayment
wear layer thickness	20 mil 0.02 in 0.51 mm
overall thickness	0.315 in 8.0 mm
nominal dimensions	7 in x 48 in 18 cm x 122 cm
actual dimensions	7.13 in x 48.03 in 18.11 cm x 122 cm
installation	floating or direct glue
approved install method	stagger
area per box	38.03 sq ft 16 pcs per box*
warranty	15 year commercial limited

For sample, order BS099 color 00604.

*Must purchase in full box quantities.

Carpet Base: Guest Room | CIS-CPT-021.3A

style	BS052
color	Z625M
product type	carpet base
fiber	eco solution q® nylon
dye method	100% solution dyed
construction	multi-level loop tip shear
tufted weight	30.0 oz/yd ² 1017.2 g/m ²
gauge	1/10 in 39.4 per 10 cm
stitches	9.33 per in 36.73 per 10 cm
size	4 in
backing	classicbac®
installation	direct glue
warranty	1 year commercial limited



For sample, order BS052 color Z625M.

Meeting Room | CIS-CPT-02

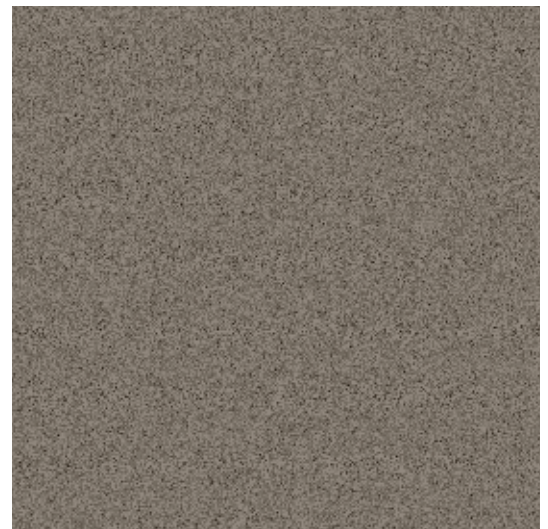
style	BS114
color	03525
product type	broadloom
fiber	eco solution q® nylon
dye method	100% solution dyed
construction	multi-level pattern cut/loop
tufted weight	32.0 oz/yd ² 1085.01 g/m ²
gauge	1/10 in 39.4 per 10 cm
stitches	12 per in 47.2 per 10 cm
size	12 ft 3.66 m
pattern repeat	6 in x 12 in 15.24 cm x 30.48 cm
backing	classicbac®
installation	direct glue
warranty	10 year commercial limited



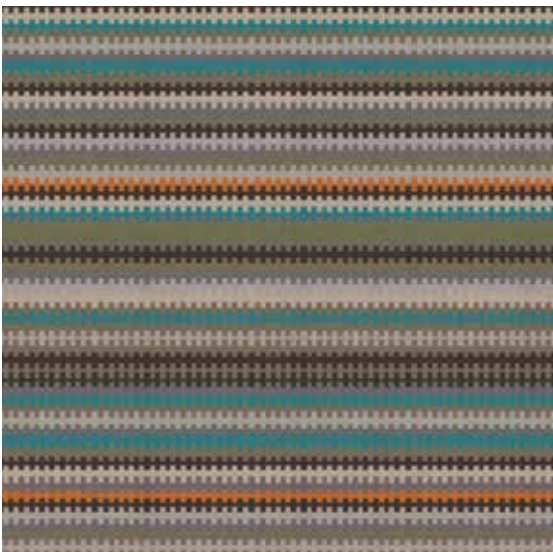
For sample, order BS114 color 03525.

Carpet Base: Corridor & Meeting Room | CIS-CPT-01A

style	BS123
color	S88IJ
product type	carpet base
fiber	eco solution q® nylon
dye method	100% solution dyed
construction	cut pile
tufted weight	30.0 oz/yd ² 1017.2 g/m ²
gauge	1/10 in 39.4 per 10 cm
stitches	9.33 per in 36.73 per 10 cm
size	4 in
backing	classicbac®
installation	direct glue
warranty	1 year commercial limited



For sample, order BS123 color S88IJ.



For sample, order BS047 or BS048 color T700B.

Corridor | CIS-CPT-01

style	BS047 13 ft 6 in BS048 15 ft
color	T700B
product type	broadloom
fiber	eco solution q [®] nylon
dye method	100% dye injection print
construction	multi-level pattern cut/loop
tufted weight	36.0 oz/yd ² 1220.65 g/m ²
gauge	1/10 in 39.4 per 10 cm
stitches	13 per in 50 per 10 cm
size	13 ft 6 in 4.11 m 15 ft 4.57 m
pattern repeat	9 in w x 42.8 in l 22.86 cm w x 108.71 cm l
backing	classicbac [®]
installation	direct glue
warranty	20 year commercial limited



Wall Wood Cladding | CIS-MW-01

style	BS105
color	00146
construction	engineered ply-core hardwood with tongue and groove
overall thickness	0.55 in 14.0 mm
nominal dimensions	7.48 in x 74.8 in 19 cm x 190 cm*
installation	nail, staple, or direct glue
area per box	31.09 sq ft
edge profile	micro-bevel
finish	UV cured urethane with aluminum oxide
recommended adhesives	CA884 35 MC direct glue adhesive CATGA tongue and groove adhesive for floating installation



For sample, order BS105 color 00146.

*Boxes may contain random lengths.

